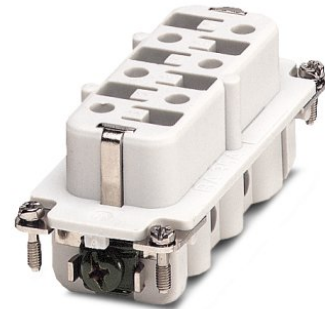


## HC-HS 6-EBUS

Order No.: 1773132

<http://eshop.phoenixcontact.de/phoenix/treeViewClick.do?UID=1773132>

HEAVYCON female insert, HS6 series, 6-pos., screw connection

### Commercial data

|                          |                    |
|--------------------------|--------------------|
| EAN                      | 4017918037642      |
| Pack                     | 10 Pcs.            |
| Customs tariff           | 85366990           |
| Weight/Piece             | 0.10312 KG         |
| Catalog page information | Page 359 (PC-2007) |

### Product notes

WEEE/RoHS-compliant since:  
03/01/2006

<http://www.download.phoenixcontact.com>  
Please note that the data given here has been taken from the online catalog. For comprehensive information and data, please refer to the user documentation. The General Terms and Conditions of Use apply to Internet downloads.

### Technical data

#### General data

|                                 |  |
|---------------------------------|--|
| Note                            | For housing HC-B16                                   |
| Connection systems              | Screw connection                                     |
| Tightening torque               | 1.2 Nm   |
| Ambient temperature (operation) | -40 °C ... 125 °C (including heating up of contacts) |
| Pollution degree                | 3  |
| Surge voltage category          | III  |

|   |   |
|---|---|
| Constructional and testing regulations  | DIN VDE 0627/86                           |
|   | DIN VDE 0110/02.79                        |
|   | DIN VDE 0110-1/04.97                      |
|   | IEC 60664-1, DIN IEC 60512                |
| Number of positions                     | 6   |
| Insertion/withdrawal cycles             | ≥ 500                                     |
| Design                                  | HS6                                       |
| Connection in acc. with standard        | IEC / EN                                  |
| Conductor cross section                 | 0.5 mm <sup>2</sup> ... 6 mm <sup>2</sup> |
| Connection cross section AWG            | 20 ... 10                                 |
| Stripping length of the individual wire | 10 mm                                     |

#### Material data

|                                    |              |
|------------------------------------|--------------|
| Inflammability class acc. to UL 94 | V0           |
| Contact material                   | Copper alloy |
| Contact surface material           | Ag           |
| Contact carrier material           | PA           |

#### Electrical characteristics

|                       |       |
|-----------------------|-------|
| Rated voltage (III/3) | 500 V |
| Rated surge voltage   | 6 kV  |
| Rated current         | 35 A  |

#### Certificates / Approvals

Approval logo



#### CSA

|                                |       |
|--------------------------------|-------|
| Nominal voltage U <sub>N</sub> | 600 V |
| Nominal current I <sub>N</sub> | 35 A  |
| AWG/kcmil                      | 20-10 |

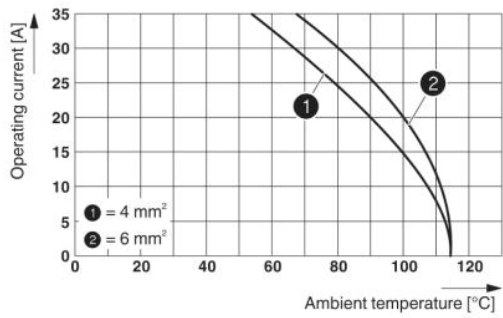
#### UL

|                                |       |
|--------------------------------|-------|
| Nominal voltage U <sub>N</sub> | 600 V |
| Nominal current I <sub>N</sub> | 35 A  |

|               |               |
|---------------|---------------|
| AWG/kcmil     | 10            |
| Certification | CSA, GOST, UL |

**Drawings**

Diagram

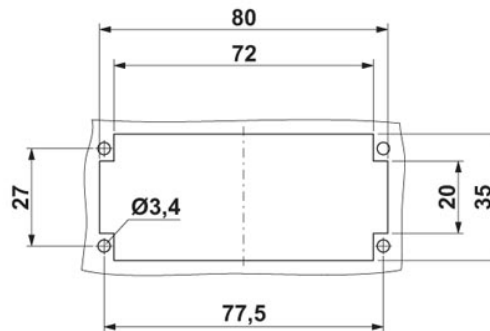
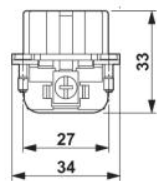


Derating diagram: HC-HS...S series

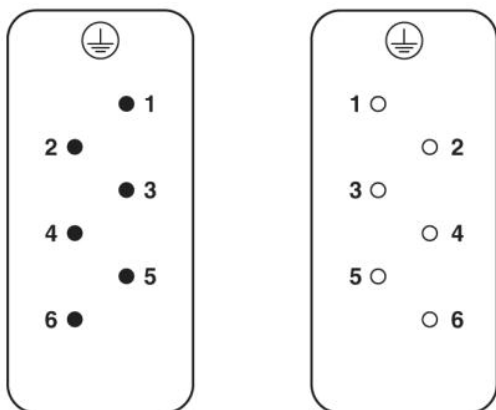
Dimensioned drawing



Female insert



Schematic diagram



**Address**

PHOENIX CONTACT GmbH & Co. KG  
Flachsmarktstr. 8  
32825 Blomberg, Germany  
Phone +49 5235 3 00  
Fax +49 5235 3 41200  
<http://www.phoenixcontact.com>



© 2008 Phoenix Contact  
Technical modifications reserved;